

Ascent™ 35

Boosts Ambiance

Napoleon's Ascent™ 35 enhances ambiance in any room with the industry's most realistic, exclusive PHAZER® log set and glowing ember bed. The clean face design of the Ascent™ 35 maximizes optimal viewing to ensure your new fireplace is enjoyed to the fullest. With various accessories and an advanced burner technology, the Ascent™ 35 is compact, stylish and robust!

- B35
- Up to 20,000 BTU's
- Top Vent
- Flame/heat adjustment
- Viewing Area: 35" w x 34 5/8" h
- Natural gas or Propane

For more detailed specifications on this unit, see page 29.

Options & Accessories



F45 & F60 Remote Controls
On/off with digital screen



Matte Black Clean Face Surround
shown with Sandstone Brick Panels



Heritage Decorative Safety Barrier
shown with MIRRO-FLAME™
Porcelain Reflective Radiant Panels



Wrought Iron Surround shown with
MIRRO-FLAME™ Porcelain Reflective
Radiant Panels



Zen Decorative Safety Barrier shown
with Sandstone Brick Panels



Black 2" Trim Kit shown with
Sandstone Brick Panels

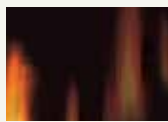


Black 3" Premium Bevelled Trim Kit
shown with MIRRO-FLAME™ Porcelain
Reflective Radiant Panels





The Ascent[™] 35 shown with Sandard Safety Barrier and Sandstone Decorative Brick Panels.



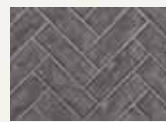
MIRRO-FLAME[™]
Porcelain Reflective
Radiant Panels



Sandstone Decorative
Brick Panels



Westminster
Standard Decorative
Brick Panels



Westminster
Herringbone Decorative
Brick Panels



Old Town Red[™]
Herringbone Decorative
Brick Panels